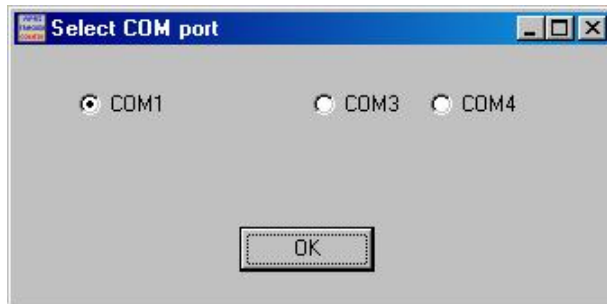
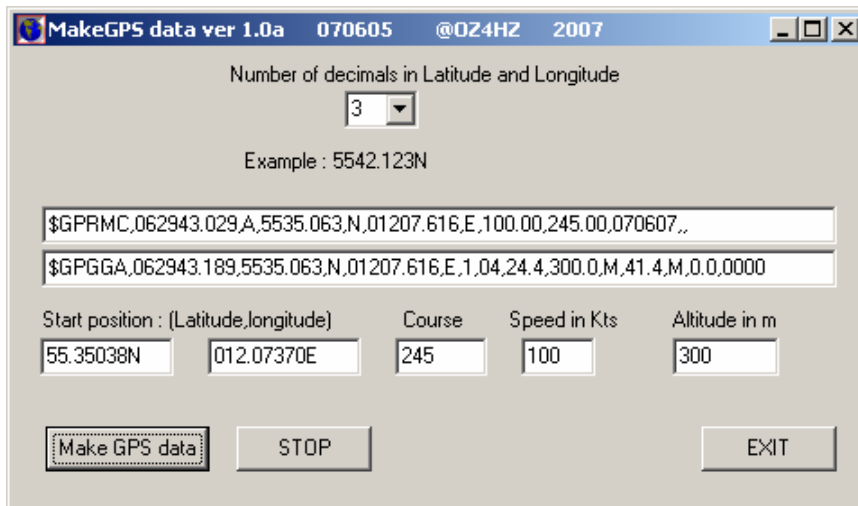


GPS Simulator program.

The GPS Simulator program can be used to "simulate" a GPS unit by generating \$GPRMC and \$GPGGA data only. Use a standard null-modem cable to connect the device (i.e. APRS tracker) to the PC. When the device is connected start the program GPSTest. The first window shows all available COM ports.



Select the COM port the device is connected to and click the OK button.
(Baudrate is always 4800 with no parity)
The next window shows the simulator program.



Input Options.

Start position (Latitude and longitude).

In the edit boxes you can type the coordinates of latitude and longitude of the start position
Because GPS units have different decimal digits you can select the number of digits from the drop down box.

Course Type the heading (0-360)

Speed Type the speed in kts (0-999)

Altitude type the altitude in m.

When you are finished with the inputs click on the **Make GPS data** button and the program starts to generate data (RMC and GGA only) which are available on the COM port and on the screen .

If you want to make some changes in position, speed, heading or altitude simply click on the **STOP** button.

Make the changes and click on the **Make GPS data** button again.

Leave the program by clicking the **EXIT** button.

Changes from ver. 1.0 : Fixed bug in number of decimals in latitude and longitude.